

## Overview for Justice & Public Safety subcommittee

---

February 10, 2011  
Secretary Alvin Keller  
North Carolina  
Department of Correction

1



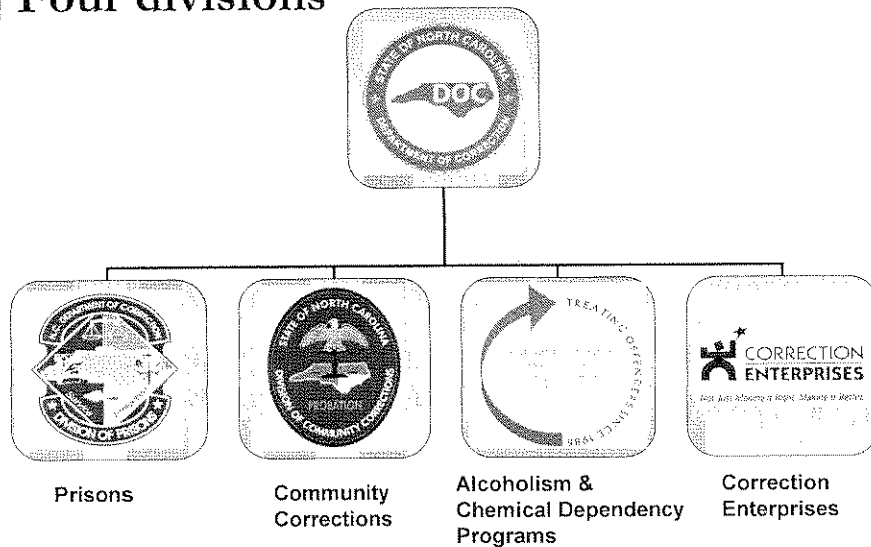
## Mission of the agency

**The mission of the North Carolina Department of Correction is to promote public safety by the administration of a fair and humane system which provides reasonable opportunities for adjudicated offenders to develop progressively responsible behavior.**

---

2

## Four divisions



3

## Workforce



- Approximately 21,000 positions
  - Division of Prisons
    - 16,200 uniformed officers
  - Division of Community Corrections
    - 2,000 certified positions

4

## Federal & legal requirements



### **Small v. Martin** – conditions of prison confinement

- 1985 lawsuit against Gov. Jim Martin, DOC Secretary and Prisons director
- Covered conditions at 49 state prisons
- Settled after trial began in 1988
- Federal court monitoring lasted almost a decade
- Small v. Martin standards have remained the "safe harbor"

5

## Federal & legal requirements



- Prison Rape Elimination Act (PREA)
- Americans with Disabilities Act (ADA)
- Prison Litigation Reform Act (PLRA)
- Religious Land Use and Institutionalized Persons Act (RLUIPA)
- Interstate Corrections Compact (ICC)
- Interstate Agreement on Detainers (IAD)
- Family Educational Rights and Privacy Act (FERPA)
- Health Insurance Portability and Accountability Act (HIPAA)
- Title VII of the Civil Rights Act of 1964
- Fair Labor Standards Act (FLSA)
- Family Medical Leave Act (FMLA)
- Genetic Information Nondiscrimination Act (GINA)

6

## Program priorities



- Operating safe and secure prisons
- Providing structured prison programs
- Substance abuse treatment
- Returning offenders as successful taxpaying citizens
- Community Colleges provide prison educational & vocational training
- Correction Enterprises provides on-the-job training and experience

7

## Program priorities



### **Supervising offenders in our communities**

- New risk management model of supervision
- Based on empirical data & research
- Risk assessment predicts risk of re-arrest
- Needs assessment IDs crime producing traits
- Risk + Needs determines supervision level
- High risk/needs = tight supervision, more contact
- Low risk/needs = minimal supervision/self-report

8

## Managing our reversion



\$1.31 billion annual budget

2.25% reversion target

---

\$30 million annual reversion

---

9

## Managing our reversion



- Hiring freeze
    - Essential positions only – public safety/direct care
  - Essential purchases only
  - Training
  - Travel
  - Jail backlog – not funded
  - Inmate medical - underfunded
- 

10

## Major issues for session...



- Budget shortfall
- Effectively manage inmate health care
  - Implementing special provision in last year's budget
  - 70% reimbursement cap
  - Inmates to underutilized hospitals
  - New secure hospital ward for inmates
  - Filing for Medicaid reimbursements
  - RFP for inmate medical management
  - New medical facilities at Central Prison & NCCIW

11

## Justice Reinvestment



- Bipartisan, data-based effort to reduce spending on corrections and improve public safety
- Facilitated by Council of State Governments
- Supported by:
  - Governor
  - Legislative leaders – both parties
  - Chief Justice

12

## Justice Reinvestment



Arizona	North Carolina
Connecticut	Ohio
Indiana	Pennsylvania
Kansas	Rhode Island
Michigan	Texas
Nevada	Vermont
New Hampshire	Wisconsin

13

## Justice Reinvestment



- Short-term: Diverts prison construction funds to community programs
- Long-term: Frees up money for educating children instead of incarcerating adults
- Recommendations to be introduced later this month

14